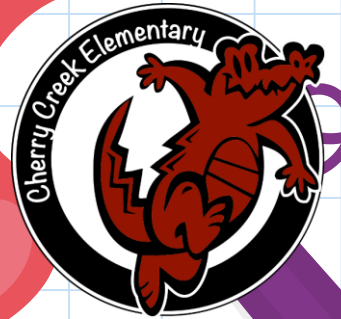




# Cherry Creek Elementary

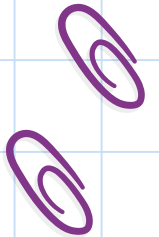
2021-2022





# Celebrations!!

- \*Caring AND Involved Parents
- \* Supportive and hard-working PTA
  - \* One to One with technology
- \* State and District that encourages and provides Professional Development
  - \*Leader in Me School - Lighthouse Status
- \* FACULTY AND STAFF- Healthy mix of new and seasoned teachers



# Celebrations!! cont...


\*Mrs. Darrington applied and received funding for an ESSER (Elementary Secondary School Emergency Relief) teacher to focus on interventions for TWO years! This is Ms. Baldwin's new role.

\*We have only had ONE student test positive for COVID this year. (The Nebo dashboard was temporarily incorrect and showed higher numbers.)


\*We are SO happy to finally have our school flag displayed! The winning entry was June Davis, a former Croc who has since moved to the middle school.

The "SWAMP" was removed this summer and will be replaced with a parking lot. This decision was made due to security and safety issues.





**Our School theme this  
year is "ALL IN"**





# New Faces and New Roles:



Amy Darrington  
Principal  
[amy.darrington@nebo.edu](mailto:amy.darrington@nebo.edu)  
801-489-2810



Kerrie Taylor  
Head Secretary  
[kerrie.taylor@nebo.edu](mailto:kerrie.taylor@nebo.edu)  
801-489-2810



Misty Pratt  
Assistant Secretary  
[misty.pratt@nebo.edu](mailto:misty.pratt@nebo.edu)  
801-489-2810



Christy Nielson  
Instructional Coach  
[christy.nielson@nebo.edu](mailto:christy.nielson@nebo.edu)  
801-489-2810



Tylene Shelley  
School Nurse  
[tylene.shelley@nebo.edu](mailto:tylene.shelley@nebo.edu)  
801-489-2810



Becky Bird  
Skill Building Coach/Office Assistant  
801-489-2810



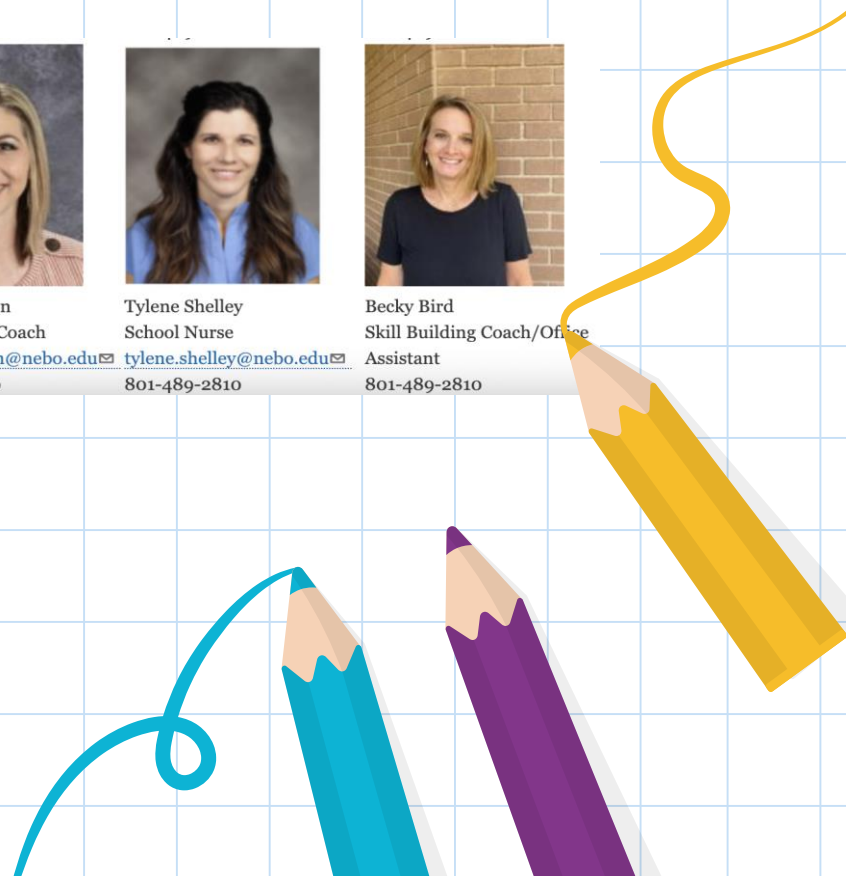
Stephanie Galt  
Title I Coordinator  
[stephanie.galt@nebo.edu](mailto:stephanie.galt@nebo.edu)



Jen Baldwin  
Intervention Specialist  
[jen.baldwin@nebo.edu](mailto:jen.baldwin@nebo.edu)



Karen Smith  
Counselor  
[karen.smith@nebo.edu](mailto:karen.smith@nebo.edu)

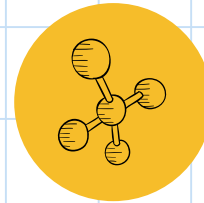


# ways to get involved:



## JOIN PTA!!!

Everyone is welcome and encouraged to join!! If you can help a little OR a lot, WE NEED YOU!!!



## PTA President:

Shannon Anderson  
Facebook: Cherry  
Creek Elementary PTA





# Ways to Stay Connected:



**Facebook**

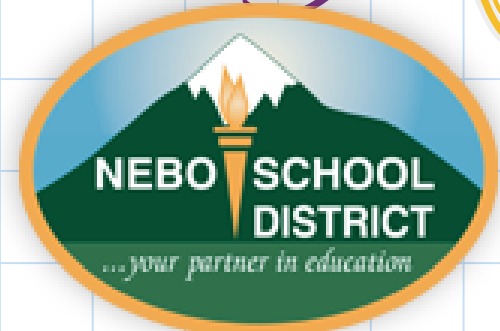
Cherry Creek  
Elementary  
&

Nebo School District



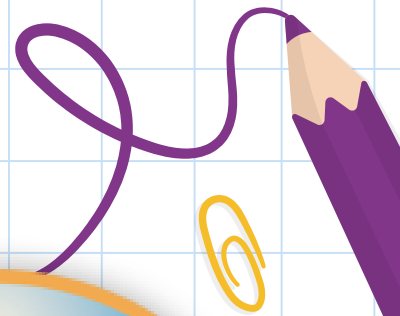
**Instagram**

@leadersofcherrycreek  
&  
@neboschooldistrict

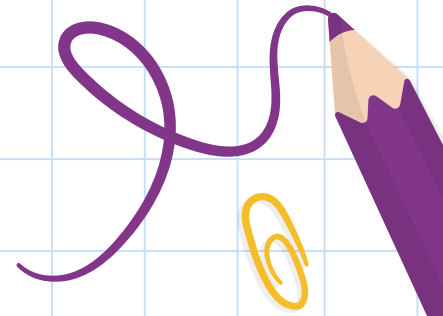


**Website**

CherryCreek.nebo.edu  
&  
Nebo.edu



# Ways to be Informed:



\*Monthly School Newsletters

\*Informational Emails

\*Emergency Notifications

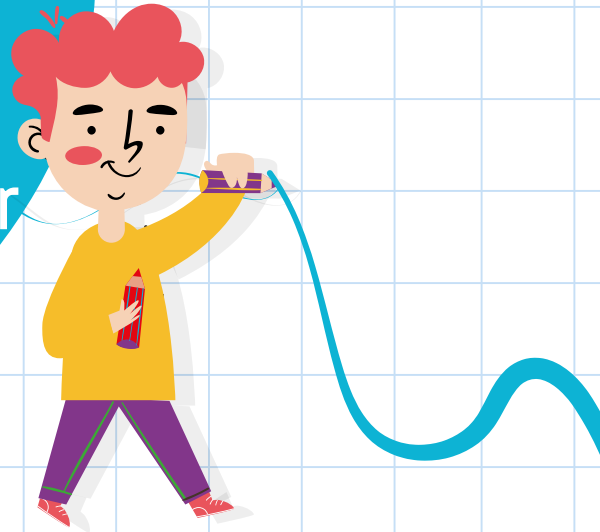


# Leader in Me-Year 8

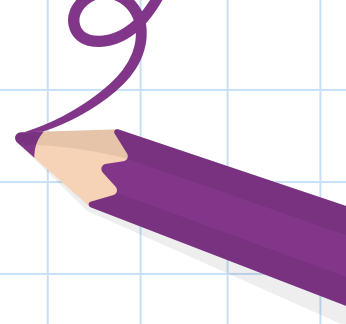
- \* Maintain & Improve Living the 7 Habits
- \* More Family Engagement- Parent Lighthouse Team and Family Engagement activities
- \* Leadership Opportunities for Students
- \* Leadership Notebooks- Improve Process of Students Tracking Goals
- \* Student Led SEP Conferences
- \* Students greeted every morning at the door by their teacher
- \* Leadership Class
- \* Leadership/7 Habits integrated into daily classroom lessons
- \* Leadership Day- September 24th, WELCOME BACK!
- \* School WIGS will focus on Reading Minutes and earning Croc Claws by living the 7 Habits.

# Wildly Important Goals

1. As a school we will read 1.5 million minutes!!
2. Every student will earn 2 Croc Claws for living the habits



# We are a TITLE-ONE School



Extra Money for Reading Interventions

Extra Money for Math Interventions

Extra Money for Teacher Professional Development

Extra Money to Pay for Leader in Me

